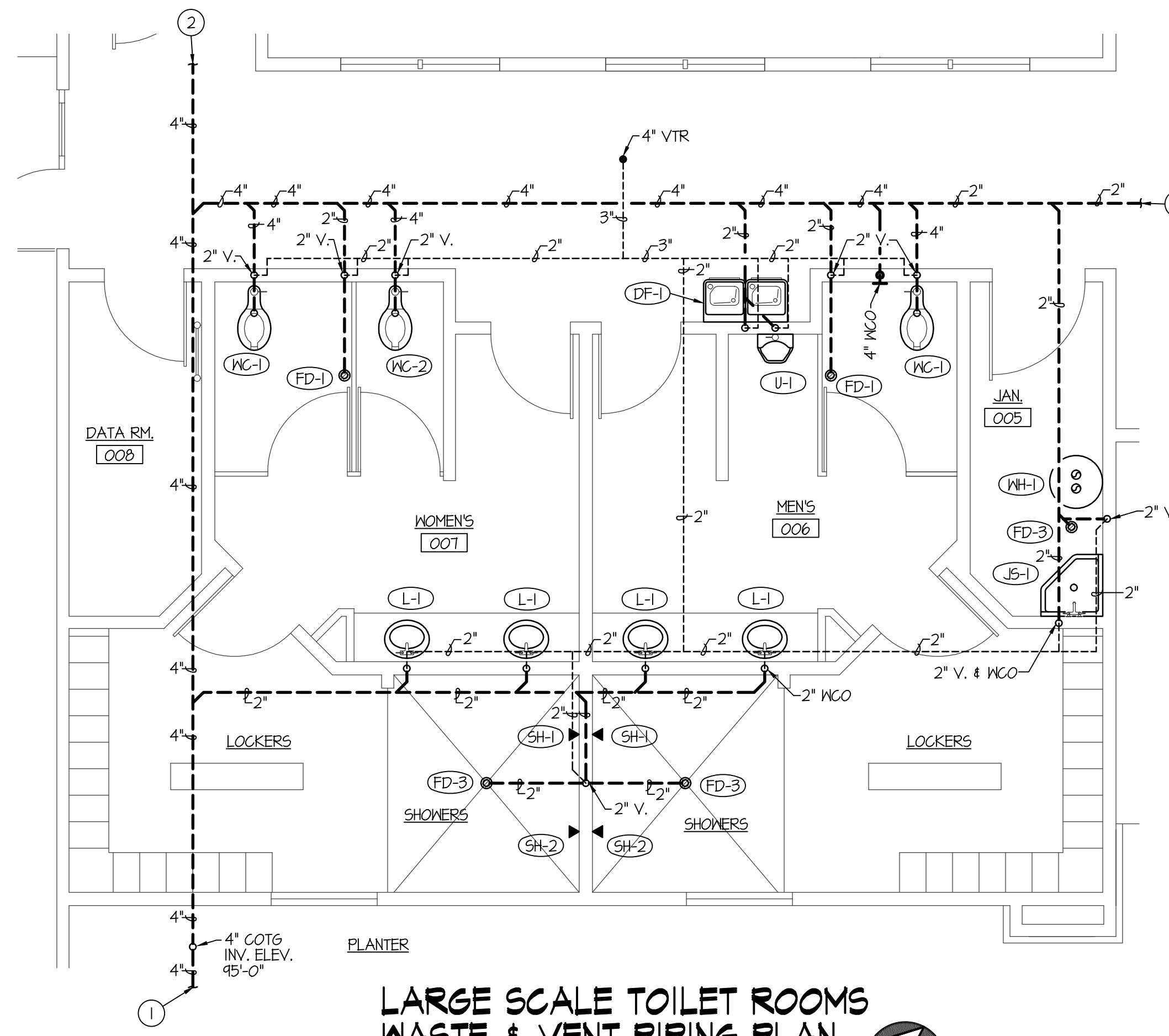


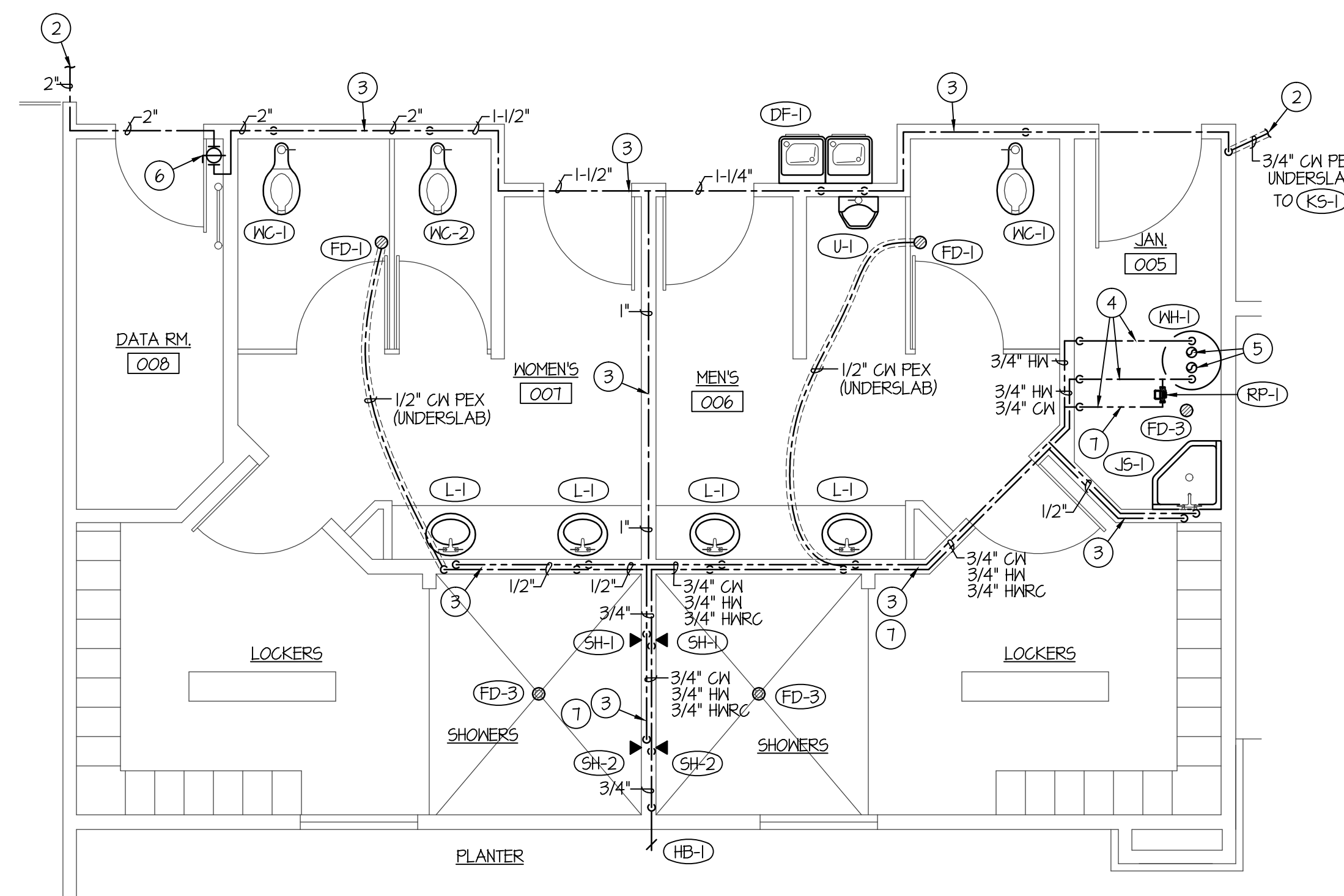
F:\180916 SUMMERFIELD CLUBHOUSE\180916 P-2.dwg Nov 07, 2014 - 4:50am

FIXTURE SCHEDULE					
SYM.	DESCRIPTION	HOT	COLD	WASTE	VENT
DF-1	BI-LEVEL DRINKING FOUNTAIN - ELKAY MODEL EZ-5TL2WGLK WITH EZH2O BOTTLE FILLER FLEXI-GUARD BUBBLERS, 1/2" STOP AND 1-1/2" P-TRAP. PROVIDE ALL INTERCONNECTING PIPING AND DRAIN.	---	1/2"	1-1/2"	1-1/2"
EW-1	EMERGENCY EYEWASH STATION - BRADLEY MODEL 514214 PEDESTAL MOUNTED EYEWASH WITH 1/2" CM SUPPLY AND 1-1/4" DRAIN.	---	1/2"	2"	2"
FD-1	2" FLOOR DRAIN WITH PRIMER - ZURN Z-415B WITH 5/8" NICKEL-BRONZE STRAINER AND 2" DEEP SEAL P-TRAP WITH ZURN I022 TRAP PRIMER LOCATED UNDER LAVATORY	---	---	2"	2"
FD-2	4" FLOOR DRAIN - ZURN Z-415B WITH 8/8" NICKEL-BRONZE STRAINER AND 4" DEEP SEAL P-TRAP	---	---	4"	2"
FD-3	2" FLOOR DRAIN - ZURN Z-415B WITH 5/8" NICKEL-BRONZE STRAINER AND 2" DEEP SEAL P-TRAP	---	---	2"	2"
FS-1	FLOOR SINK - ZURN Z-1900-KC WITH WHITE ENAMEL FINISH, DOME STRAINER & 4" DEEP SEAL P-TRAP. PROVIDE 3/4" GRATE OVER SINK.	---	---	4"	2"
HB-1	EXTERIOR HOSE BIBB - ZURN MODEL Z-1310 "ECOLOTRON" WITH REMOVABLE KEY. LENGTH TO SUIT WALL THICKNESS.	---	3/4"	---	---
JS-1	FLOOR MOUNTED SERVICE SINK - KOHLER K-6710 "WHITBY" W/ K-8940 NIRE RIM GUARD, K-8428 FAUCET ASSEMBLY & K-9142 STRAINER & DEEP SEAL P-TRAP. HOSE & HOSE CLAMP	1/2"	1/2"	2"	2"
L-1	ADA COUNTERTOP LAVATORY - KOHLER MODEL K-2905-4 SELF-RIMMING "FARMINGTON" WITH MOEN L4601 LEVER FAUCET, K-T115 OPEN GRID STRAINER, 1/2" BALL STOPS AND 1-1/4" P-TRAP. INSULATE HOT WATER SUPPLY AND TRAP WITH JACKET.	1/2"	1/2"	1-1/2"	1-1/2"
RP-1	CIRCULATING PUMP - GRUNDFOS MODEL UP15-10B1 BRONZE PUMP WITH 3/4" FLANGES (2 GPM @ 5' OF HEAD) 120/60/1	3/4"	---	---	---
SH-1	ADA SHOWER - MOEN 2352 SHOWER VALVE & MOEN 3664EP HANDHELD SHOWER ASSEMBLY WITH 24" SLIDE BAR AND T4P BALANCING VALVE. SEE ARCH. PLANS FOR GRAB BARS AND SEAT.	1/2"	1/2"	---	---
SH-2	PACKAGED WALL SHOWER - ACORN MODEL 480B-W SINGLE WALL SHOWER WITH T4P MIXING VALVE AND SHOWER HEAD	1/2"	1/2"	---	---
S-1	SINGLE COMP. SINK WITH FAUCET - ELKAY MODEL LR-2214 WITH 10 GA TYPE 304 STAINLESS STEEL CONSTRUCTION, 3-HOLE FAUCET DRILLINGS, LK-4100 LEVER HANDLE FAUCET, LK-49 STRAINER, 1-1/2" P-TRAP AND 1/2" BALL TYPE STOP VALVES.	1/2"	1/2"	2"	2"
U-1	ADA WALL MOUNTED URINAL - KOHLER K-4904-T "FRESHMAN" WITH WALL CARRIER & SLOAN REGAL BATTERY FLUSH VALVE. MOUNT AT ADA LEVEL.	---	3/4"	2"	2"
WC-1	ADA FLUSH VALVE WATER CLOSET - KOHLER K-4368 "HIGHCLIFF" WITH ELONGATED BOWL, K-4610C WHITE OPEN FRONT SEAT, SLOAN REGAL BATTERY FLUSH VALVE AND BOLT CAPS.	---	1"	4"	2"
WC-2	FLUSH VALVE WATER CLOSET - KOHLER K-4350 "WELCOMME" WITH ELONGATED BOWL, K-4610C WHITE OPEN FRONT SEAT, SLOAN REGAL BATTERY FLUSH VALVE AND BOLT CAPS.	---	1"	4"	2"
NH-1	75 GALLON GAS WATER HEATER - A.O. SMITH MODEL GFD75L POWER DIRECT VENT GAS WATER HEATER WITH 120 VOLT POWER CORD, AMTROL ST-5 EXPANSION TANK, T4P VALVE, 75,000 BTU INPUT	3/4"	3/4"	---	---
NH-2	ELEC. WATER HEATER - EEMAX EMT-1 INSTANTANEOUS ELEC. WATER HEATER WITH 120 VOLT POWER CORD 1.4 KW, SEE DETAIL ON SHEET P-3	1/2"	1/2"	---	---



LARGE SCALE TOILET ROOMS  
WASTE & VENT PIPING PLAN

SCALE: 1/4" = 1'-0"




LARGE SCALE TOILET ROOMS  
WATER PIPING PLAN

SCALE: 1/4" = 1'-0"

PLAN NOTES:

- SEE CIVIL SITE PLAN FOR CONTINUATION OF 4" SANITARY SEWER MAIN.
- SEE PLUMBING FLOOR PLAN ON SHEET P-1 FOR CONTINUATION OF PIPING.
- RUN WATER PIPING Laterally IN STUD SPACE OF INTERIOR WALLS AND OVER DOORWAYS. NO WATER PIPING ALLOWED IN COLD ATTIC.
- RUN 3/4" HN 3/4" CM & 3/4" HNRG EXPOSED ON CEILING OF JANITOR CLOSET FROM WATER HEATER TO INTERIOR WALL AS SHOWN. DO NOT RUN WATER PIPING IN COLD ATTIC.
- RISE (2) 3" CPVC FLUES FROM WATER HEATER UP THRU ROOF TO VERTICAL VENT TERMINATION ASSEMBLY. SEE WATER HEATER DETAIL ON SHEET P-3. SEAL ROOF PENETRATION WEATHERTIGHT.
- INSTALL BALL TYPE SHUTOFF VALVE ON 2" CM MAIN SERVING TOILET ROOMS IN ACCESSIBLE LOCATION AS SHOWN.
- INSTALL 3/4" HNRG LINE FROM END OF HN LINE SERVING SHOWERS AND RUN IN STUD SPACE OF WALL BACK TO JANITOR CLOSET AS SHOWN.



**Engineered Systems Associates  
Mechanical Engineers**

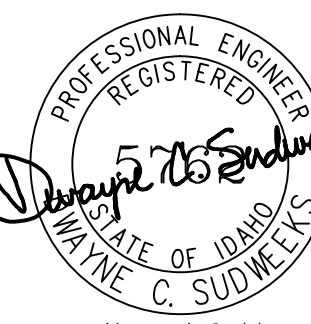
Dwayne Sudweeks  
1355 East Center - Pocatello, Idaho 83201  
Phone: (208) 233-0501 Fax: (208) 233-0529 email: esa@engsystems.com

**SUMMERFIELD CLUBHOUSE**  
REXBURG, IDAHO

PROJECT:

**LARGE SCALE PLUMBING FLOOR PLANS**

SHEET TITLE:



PROFESSIONAL ENGINEER  
REGISTERED  
Dwayne C. Sudweeks  
STATE OF IDAHO  
NO. 5107  
EXPIRES 12/31/2014

DRWN. BY: SR	CHK. BY: DCS
JOB NO. 180916	DATE: NOV. 2014

SHEET:  
**P-2**  
OF: THREE